

## Gallium Nitride 28V, 25W RF Power Transistor

Built using the SIGANTIC® NRF1 process - A proprietary GaN-on-Silicon technology

### FEATURES

- Optimized for broadband operation from DC - 4000MHz
- 25W P<sub>3dB</sub> CW narrowband power
- 10W P<sub>3dB</sub> CW broadband power from 500-1000MHz
- Characterized for operation up to 32V
- 100% RF tested
- Thermally enhanced industry standard package
- High reliability gold metallization process
- Lead-free and RoHS compliant
- Subject to EAR99 export control



**Broadband  
25 Watt, 28 Volt  
GaN HEMT**



**RF Specifications (CW):** V<sub>DS</sub> = 28V, I<sub>DQ</sub> = 225mA, Frequency = 3000MHz, T<sub>C</sub> = 25°C, Measured in Nitronex Test Fixture

| Symbol           | Parameter  | Min                                   | Typ  | Max | Units |
|------------------|--|---------------------------------------|------|-----|-------|
| P <sub>3dB</sub> | Average Output Power at 3dB Gain Compression   | 22                                    | 25   | -   | W     |
| P <sub>1dB</sub> | Average Output Power at 1dB Gain Compression   | 18                                    | 21   | -   | W     |
| G <sub>SS</sub>  | Small Signal Gain  | 12.5                                  | 13.5 | -   | dB    |
| η                | Drain Efficiency at 3dB Gain Compression   | 60                                    | 65   | -   | %     |
| ψ                | Output mismatch stress, VSWR = 10:1, all phase angles, P <sub>OUT</sub> = P <sub>SAT</sub> | No Performance Degradation After Test |      |     |       |

**Absolute Maximum Ratings:** Not simultaneous, T<sub>C</sub> = 25°C unless otherwise noted

| Symbol           | Parameter   | Max        | Units |
|------------------|---|------------|-------|
| V <sub>DS</sub>  | Drain-Source Voltage                                | 100        | V     |
| V <sub>GS</sub>  | Gate-Source Voltage                                 | -10 to 3   | V     |
| I <sub>G</sub>   | Gate Current  | 40         | mA    |
| P <sub>T</sub>   | Total Device Power Dissipation (Derated above 25°C) | 33         | W     |
| θ <sub>JC</sub>  | Thermal Resistance (Junction-to-Case)               | 5.25       | °C/W  |
| T <sub>STG</sub> | Storage Temperature Range                           | -65 to 150 | °C    |
| T <sub>J</sub>   | Operating Junction Temperature                      | 200        | °C    |
| HBM              | Human Body Model ESD Rating (per JESD22-A114)       | 1A (>250V) |       |
| MM               | Machine Model ESD Rating (per JESD22-A115)          | M1 (>50V)  |       |

## DC Specifications: $T_C = 25^\circ\text{C}$

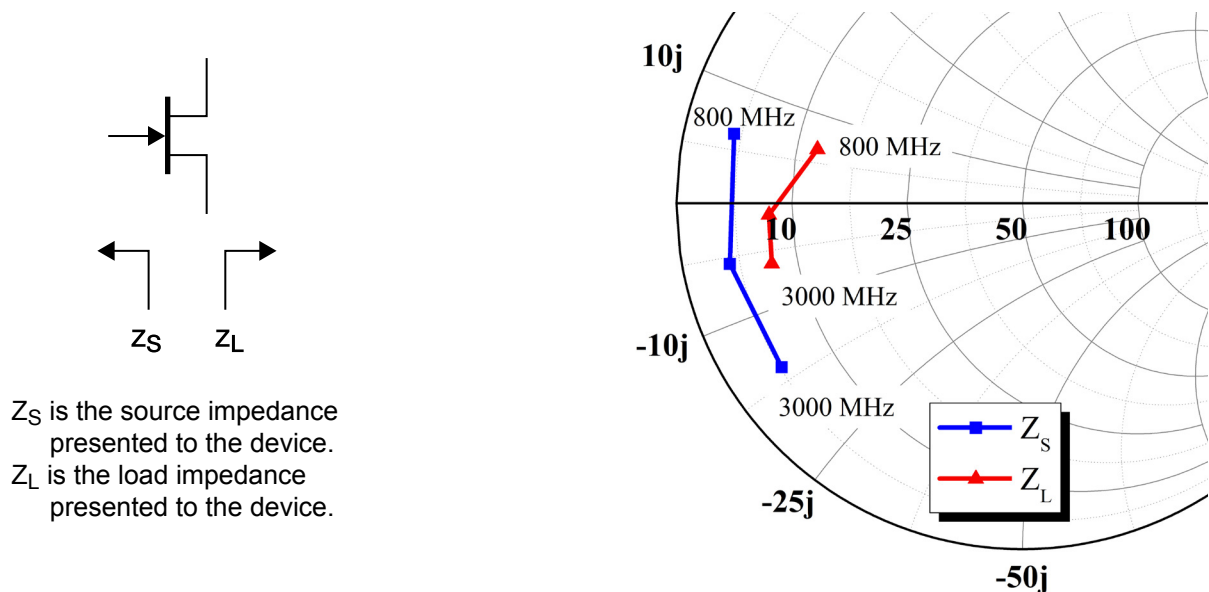
| Symbol                     | Parameter   | Min  | Typ  | Max  | Units    |
|----------------------------|---|------|------|------|----------|
| <b>Off Characteristics</b> |   |      |      |      |          |
| $V_{BDS}$                  | Drain-Source Breakdown Voltage<br>( $V_{GS} = -8\text{V}$ , $I_D = 8\text{mA}$ )  | 100  | -    | -    | V        |
| $I_{DLK}$                  | Drain-Source Leakage Current<br>( $V_{GS} = -8\text{V}$ , $V_{DS} = 60\text{V}$ )   | -    | 1    | 5    | mA       |
| <b>On Characteristics</b>  |   |      |      |      |          |
| $V_T$                      | Gate Threshold Voltage<br>( $V_{DS} = 28\text{V}$ , $I_D = 8\text{mA}$ )  | -2.3 | -1.8 | -1.3 | V        |
| $V_{GSQ}$                  | Gate Quiescent Voltage<br>( $V_{DS} = 28\text{V}$ , $I_D = 225\text{mA}$ )  | -2.0 | -1.5 | -1.0 | V        |
| $R_{ON}$                   | On Resistance<br>( $V_{GS} = 2.0\text{V}$ , $I_D = 60\text{mA}$ )   | -    | 0.44 | 0.55 | $\Omega$ |
| $I_D$                      | Drain Current<br>( $V_{DS} = 7\text{V}$ pulsed, $300\mu\text{s}$ pulse width,<br>$0.2\%$ duty cycle, $V_{GS} = 2.0\text{V}$ ) | 4.9  | 5.4  | -    | A        |

## Load-Pull Data, Reference Plane at Device Leads

$V_{DS}=28\text{V}$ ,  $I_{DQ}=225\text{mA}$ ,  $T_A=25^\circ\text{C}$  unless otherwise noted

**Table 1:** Optimum Source and Load Impedances for CW Gain, Drain Efficiency, and Output Power Performance

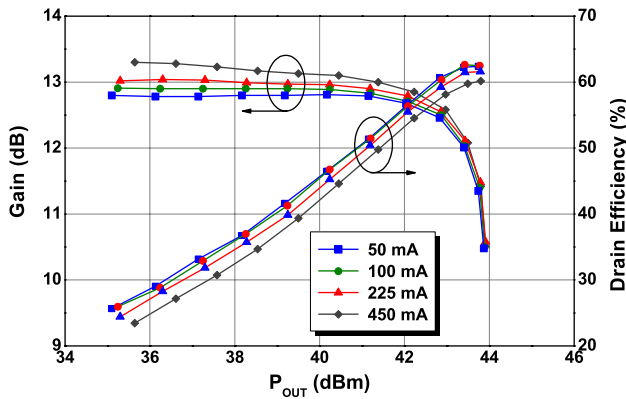
| Frequency (MHz) | $Z_S$ ( $\Omega$ ) | $Z_L$ ( $\Omega$ ) |
|-----------------|--------------------|--------------------|
| 800             | $3.9 + j5.9$       | $12.2 + j6.1$      |
| 2000            | $3.7 - j5.1$       | $7.7 - j1.1$       |
| 3000            | $4.7 - j15.3$      | $7.4 - j5.8$       |



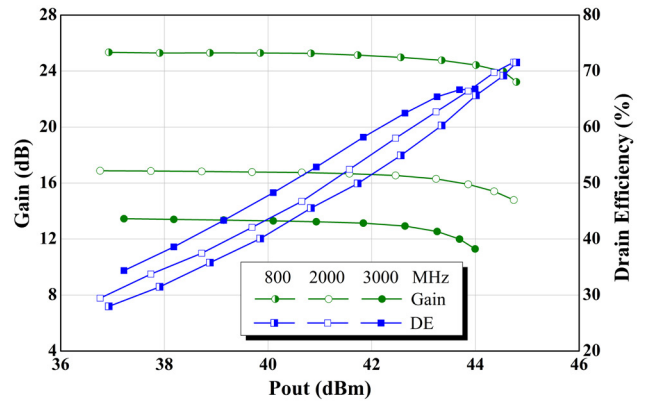
**Figure 1** - Optimal Impedances for CW Performance,  $V_{DS} = 28\text{V}$ ,  $I_{DQ} = 225\text{mA}$

**Load-Pull Data, Reference Plane at Device Leads**

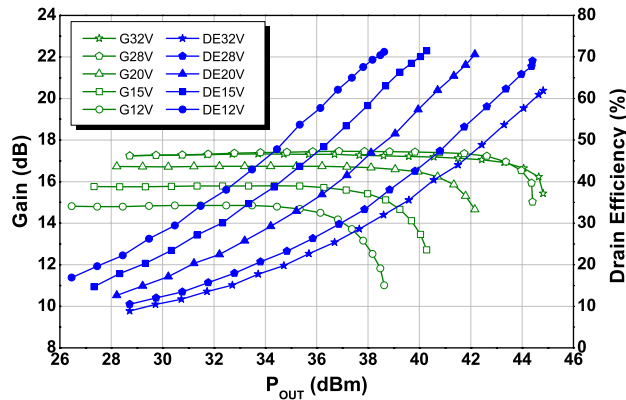
$V_{DS}=28V, I_{DQ}=225mA, T_A=25^{\circ}C$  unless otherwise noted.



**Figure 2 - Typical CW Performance, Over Current, Frequency = 3000MHz**



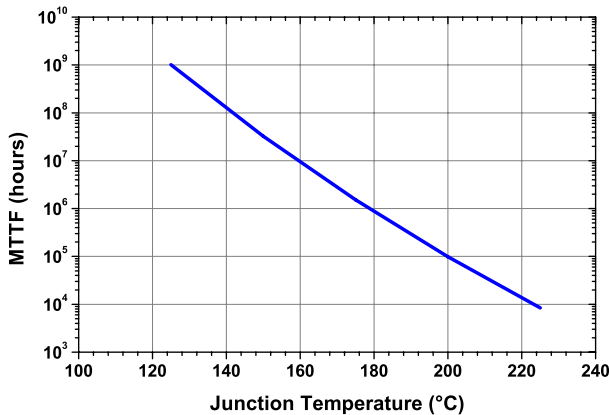
**Figure 3 - Typical CW Performance Over Frequency**



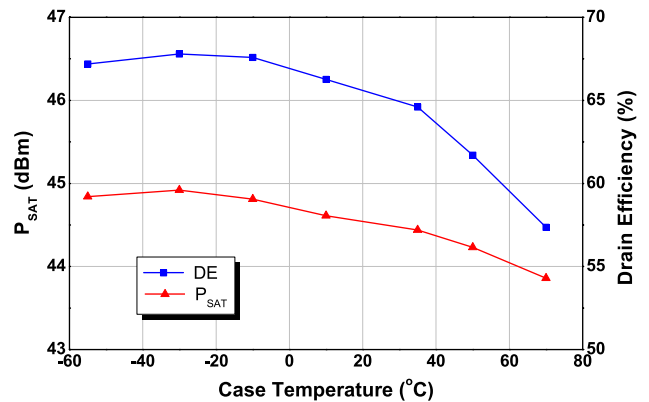
**Figure 4 - Typical CW Performance Over Voltage, Impedances Held Constant, Frequency = 1800MHz**

**Typical Device Characteristics**

$V_{DS}=28V, I_{DQ}=225mA, T_A=25^{\circ}C$  unless otherwise noted.



**Figure 5 - MTTF of NRF1 Devices as a Function of Junction Temperature**



**Figure 6 - Typical CW Performance in Nitronex Test Fixture, Frequency = 3000MHz**

## NPTB00025, 3000MHz CW Production Test Fixture

$V_{DS}=28V$ ,  $I_{DQ}=225mA$ ,  $T_A=25^{\circ}C$  unless otherwise noted. Additional design information and data available at [www.nitronex.com](http://www.nitronex.com).

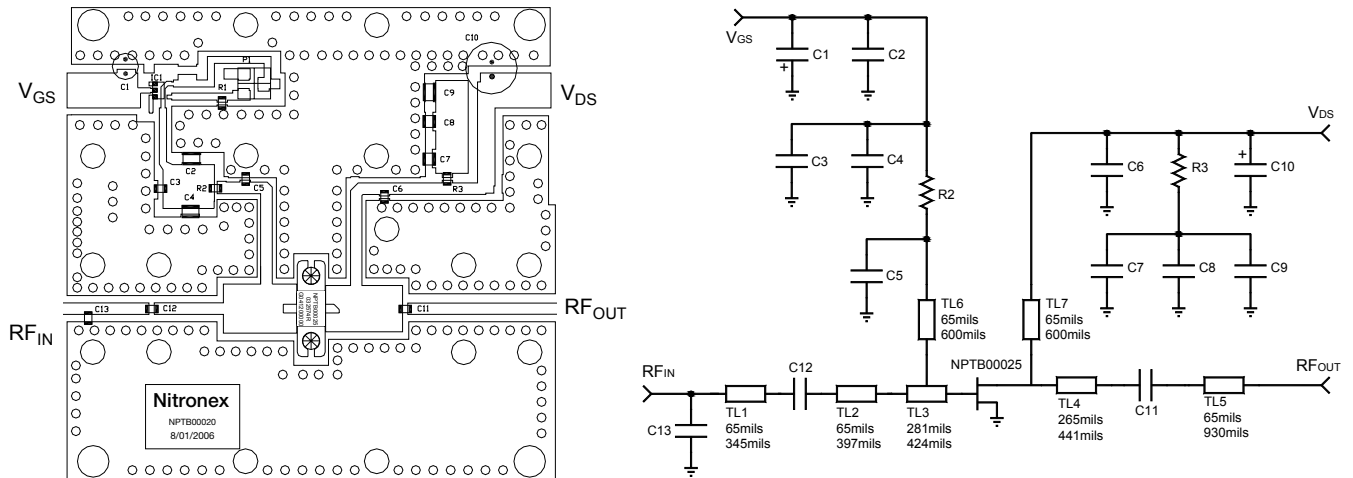


Figure 7 - NPTB00025 3000MHz Test Fixture

Table 2: NPTB00025 3000MHz Test Fixture Bill of Materials

| Name             | Value    | Vendor          | Part Number                     |
|------------------|----------|-----------------|---------------------------------|
| C1               | 150uF    | Nichicon        | UPW1C151MED                     |
| C10              | 270uF    | United Chmi-Con | ELXY630ELL271MK25S              |
| C2, C8           | 0.1uF    | Kemet           | C1206C104K1RACTU                |
| C3, C7           | 0.01uF   | AVX             | 12061C103KAT2A                  |
| C4, C9           | 1.0 uF   | Panasonic       | ECJ-5YB2A105M                   |
| C5, C6, C11, C12 | 5.6pF    | ATC             | ATC600F5R6CT                    |
| C13              | 1.2pF    | ATC             | ATC600F1R2AT                    |
| R2               | 49.9 ohm | Panasonic       | ERJ-6ENF49R9V                   |
| R3               | 0.33 ohm | Panasonic       | ERJ-6RQFR33V                    |
| Substrate        | -        | Taconic         | RF35, t=30mil, $\epsilon_r=3.5$ |

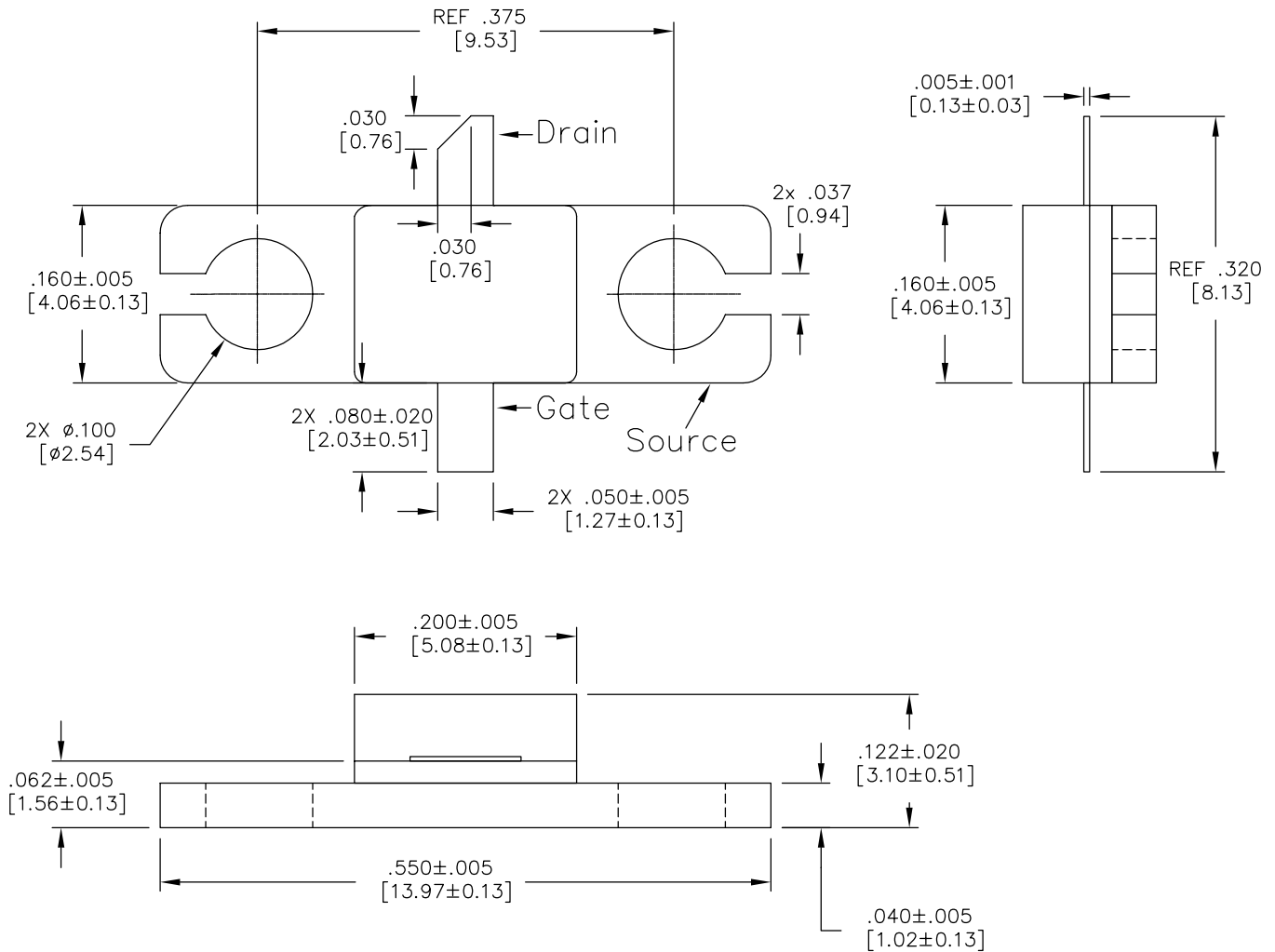
# NPTB00025



## Ordering Information<sup>1</sup>

| Part Number | Description   |
|-------------|---|
| NPTB00025B  | NPTB00025 in AC200B-2 Metal-Ceramic Bolt-Down Package |

1: To find a Nitronex contact in your area, visit our website at <http://www.nitronex.com>



**Figure 8 - AC200B-2 Metal-Ceramic Package Dimensions and Pinout (all dimensions are in inches [mm])**

## Nitronex, LLC

2305 Presidential Drive  
Durham, NC 27703 USA  
+1.919.807.9100 (telephone)  
+1.919.807.9200 (fax)  
info@nitronex.com  
www.nitronex.com

## Additional Information

**This part is lead-free and is compliant with the RoHS directive (Restrictions on the Use of Certain Hazardous Substances in Electrical and Electronic Equipment).**

## Important Notice

Nitronex, LLC reserves the right to make corrections, modifications, enhancements, improvements and other changes to its products and services at any time and to discontinue any product or service without notice. Customers should obtain the latest relevant information before placing orders and should verify that such information is current and complete. All products are sold subject to Nitronex terms and conditions of sale supplied at the time of order acknowledgment. The latest information from Nitronex can be found either by calling Nitronex at 1-919-807-9100 or visiting our website at [www.nitronex.com](http://www.nitronex.com).

Nitronex warrants performance of its packaged semiconductor or die to the specifications applicable at the time of sale in accordance with Nitronex standard warranty. Testing and other quality control techniques are used to the extent Nitronex deems necessary to support the warranty. Except where mandated by government requirements, testing of all parameters of each product is not necessarily performed.

Nitronex assumes no liability for applications assistance or customer product design. Customers are responsible for their product and applications using Nitronex semiconductor products or services. To minimize the risks associated with customer products and applications, customers should provide adequate design and operating safeguards.

Nitronex does not warrant or represent that any license, either express or implied, is granted under any Nitronex patent right, copyright, mask work right, or other Nitronex intellectual property right relating to any combination, machine or process in which Nitronex products or services are used.

Reproduction of information in Nitronex data sheets is permitted if and only if said reproduction does not alter any of the information and is accompanied by all associated warranties, conditions, limitations and notices. Any alteration of the contained information invalidates all warranties and Nitronex is not responsible or liable for any such statements.

Nitronex products are not intended or authorized for use in life support systems, including but not limited to surgical implants into the body or any other application intended to support or sustain life. Should Buyer purchase or use Nitronex, LLC products for any such unintended or unauthorized application, Buyer shall indemnify and hold Nitronex, LLC, its officers, employees, subsidiaries, affiliates, distributors, and its successors harmless against all claims, costs, damages, and expenses, and reasonable attorney fees arising out of, directly or indirectly, any claim of personal injury or death associated with such unintended or unauthorized use, notwithstanding if such claim alleges that Nitronex was negligent regarding the design or manufacture of said products.

Nitronex and the Nitronex logo are registered trademarks of Nitronex, LLC.  
All other product or service names are the property of their respective owners.  
©Nitronex, LLC 2012. All rights reserved.