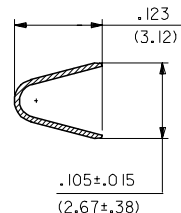
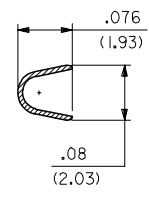


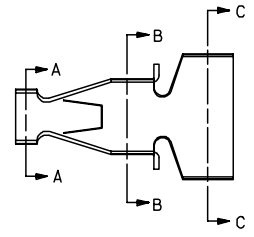
SECTION C-C



SECTION B-B



SECTION A-A



NOTES:

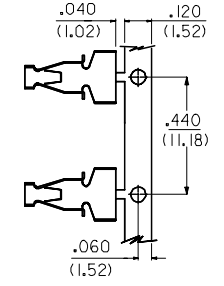
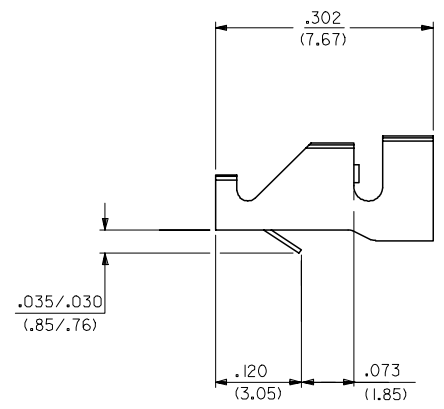
1. MATERIAL: 260 BRASS .008 THK
2. TERMINAL 4706-(***)* ACCEPTS 16 TO 18 AWG WIRE WITH INSULATION DIA OF .120 MAX
3. TERMINALS CONFORM TO SOLDERABILITY SPEC 152
4. PRODUCT SPECIFICATION: PS-4706-001

4706-*(****)*
 BLANK=SEE SHT 1
 3=SEE SHEET 2
 FORM
 BLANK=CHAIN
 L=LOOSE

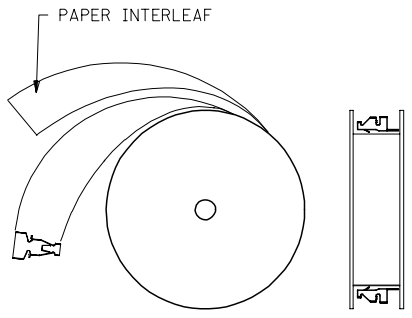
PLATING PER SDES-88

*(P909) OVERALL HOT TIN DIP: 2.54 MICROMETERS MIN

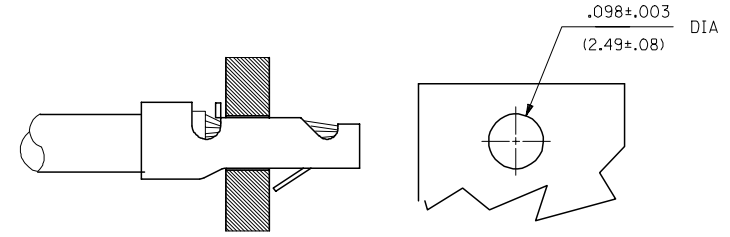
*THE PRIMARY SHIPPING CARTON WILL BE LABELED "COMPLIANT TO ROHS DIRECTIVE 2002/95/EC AND ELV ANNEX II OF DIRECTIVE 2000/53/EC." CARTONS WITHOUT THIS LABEL MAY CONTAIN PRODUCT WITH TIN-LEAD PLATING.



CARRIER DETAIL



WINDING SPEC



RECOMMENDED PC BOARD

4706-(***)*

EDP NO.	ENG NO		
02-09-2105	4706-(P909)		
- -	-()		
- -	-()		

CHANGE TO ME10 EC NO: UCP2005-0966 DRAWN/ADRATNOL 2004/11/19 CHKD: SAMIEC 2004/07/059 APPR: MMARGULIS 2004/11/054	QUALITY SYMBOLS ▽=0 ▽=0
-------------------------------------------------------------------------------------------------------------------------------	-------------------------------

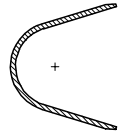
GENERAL TOLERANCES (UNLESS SPECIFIED)	
mm	INCH
4 PLACES ± .010	± .0004
3 PLACES ± .014	± .0005
2 PLACES ± 0.25	± .010
1 PLACE ± 0.36	± .014
ANGULAR ±1/2°	

DRAWN BY SAMIEC	DATE 02/25/92
CHECKED BY PATEL	DATE 02/25/92
APPROVED BY LENZ	DATE 02/25/92

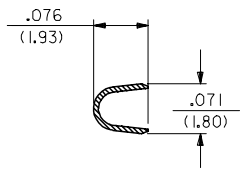
DIMENSION STYLE IN/MM	.062 SCALE ---	DESIGN UNITS INCH	THIRD ANGLE PROJECTION
MATERIAL NO. SEE CHART		DOCUMENT NO. SD-4706	SHEET NO. 1 OF 2

13 12 11 10 9 8 7 6 5 4 3 2 1

J
I
H
G
F
E
D
C
B
A



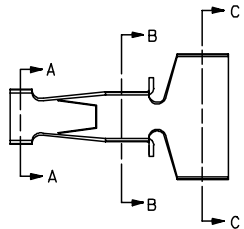
SECTION C-C



SECTION B-B



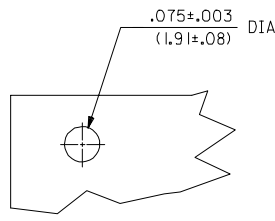
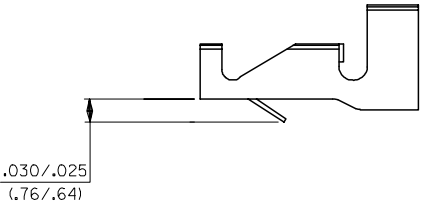
SECTION A-A



NOTES:

1. THIS PART IS THE SAME AS SHEET 1 EXCEPT AS SHOWN
2. MATERIAL: 260 BRASS .006 THK
3. FINISH: (909) * OVERALL HOT TIN DIP: 2.54 MICROMETERS MIN.
4. TERMINAL 4706-3(***)* ACCEPTS 18 TO 24 AWG WIRE WITH INSULATION DIA OF .120 MAX

*THE PRIMARY SHIPPING CARTON WILL BE LABELED 'COMPLIANT TO RoHS DIRECTIVE 2002/95/EC AND ELV ANNEX II OF DIRECTIVE 2000/53/EC.' CARTONS WITHOUT THIS LABEL MAY CONTAIN PRODUCT WITH TIN-LEAD PLATING.



RECOMMENDED PC BOARD
.062 THK

4706-3(***)*			
EDP NO.	ENG NO.		
02-07-2101	4706-3(P909)		

CHANGE TO ME10 EC NO: UCP2005-0966 DRW:ADRATNOL 2004/11/19 CHKD: SAMIEC 2004/11/19 APPR: YMARGULIS 2004/11/04	QUALITY SYMBOLS	GENERAL TOLERANCES (UNLESS SPECIFIED)	DIMENSION STYLE IN/MM	SCALE ---	DESIGN UNITS INCH	THIRD ANGLE PROJECTION
	▽=0	mm INCH	DRAWN BY DATE			TITLE
	▽=0	4 PLACES ± --- ± ---	SAMIEC 02/25/92			STRAIN RELIEF TERMINAL
		3 PLACES ± --- ± .010	CHECKED BY DATE			
	2 PLACES ± 0.25 ± .014	PATEL 02/25/92				
	1 PLACE ± 0.36 ± ---	APPROVED BY DATE				
	ANGULAR ±1/2°	LENZ 02/25/92				
	DRAFT WHERE APPLICABLE MUST REMAIN WITHIN DIMENSIONS	MATERIAL NO.	SIZE C	THIS DRAWING CONTAINS INFORMATION THAT IS PROPRIETARY TO MOLEX INCORPORATED AND SHOULD NOT BE USED WITHOUT WRITTEN PERMISSION	DOCUMENT NO. SD-4706	SHEET NO. 2

12 11 10 9 8 7 6 5 4 3 2 1