

MediSpec™ Medical Plastic Circular (MPC) Interconnect System

molex®

Combining premium performance and ease-of-use, MediSpec™ Medical Plastic Circular (MPC) Interconnect System incorporates proven cost-effective technology to meet the stringent standards of medical-device users

Features and Benefits

Lightweight Medical Grade Plastic Housings.

PPSU for Re-Use / Sterilization apps

Polycarbonate for Single-use apps

Withstands medical industry sterilization processes including autoclave, Ethylene oxide (EtO), gamma and chemical

IP64 rating option available

Protects against dust ingress and splashing water



Simple push-pull mating engagement with unique locking sleeve

Easy to use. Latch provides cable un-mating force to 50 N min for D1 and 85 N (min.) for D2

MediSpec™ Medical Plastic Circular (MPC) Interconnect System (Left: Male Plugs; Right: Panel-Mount Receptacle)

Custom cable assemblies available

Molex can offer a complete cable solution, from design through manufacturing, from one of our ISO 13485 certified facilities globally positioned to meet customer needs

Applications

Medical

- Surgical Instrumentation
- Electrophysiology
- Therapeutic
- Patient Monitoring
- Imaging
- Dental
- Disposables (Sensors / Catheters)

Other Industries

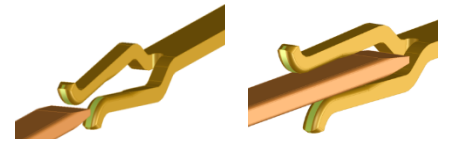
- Instrumentation
- Test and Measurement
- Avionics
- Data Acquisition
- Entertainment Equipment



Medical Imaging



Surgical Instrumentation



Same low-cost, high-performance signal contacts for both D1 and D2 form factors

Supports economical connector while delivering low-contact resistance

Single Use Male

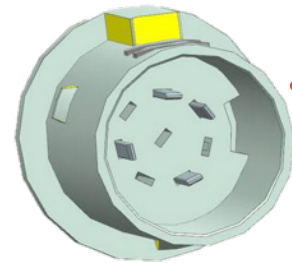
Provides a non-locking, passive latch to provide the lowest applied cost alternative. This provides 10n min un-mating force in the D1 and 15n min in the D2

Factory potting of the terminal retainer assemblies

Assures there is a barrier against dust and moisture at all locations, including unpopulated pin fields to seal them whether there is a pin in them or not

Selective pin-count capability with each diameter interface

Enables contact-usage flexibility without wasted pins



D1 and D2 can be selectively loaded

Meets specific pin count needs (D1 four-circuit example shown)

MediSpec™ Medical Plastic Circular (MPC) Interconnect System



Ordering Information

Order No.	Diameter	Description	Circuit Size	Body Color	IP Rating
172860-0810	D1	Panel Mount Receptacle	8	Black	IP50
203020-0810	D1	In-Line Receptacle	8	Black	IP50
202405-0810	D1	In-Line Receptacle (Shrouded)	8	Black	IP50
172870-0810	D1	Standard Male	8	Black	IP50
172350-0810	D1	Single Use / Disposable Male	8	Black	IP50

Order No.	Diameter	Description	Circuit Size	Body Color	IP Rating
202110-1710	D2	Panel Mount Receptacle	17	Black	IP50
202400-1710	D2	In-Line Receptacle Shrouded	17	Black	IP50
202112-1710	D2	Standard Male	17	Black	IP50
172113-1730	D2	Single Use / Disposable Male	17	Black	IP50

Custom Product	Description
Contact Molex	MediSpec™ Medical Plastic Circular (MPC) Cable Assemblies

Additional Ordering Information

D1 Version

Released Connector Kit Series No.	Description	Selective Circuit Sizes	Sealed IP Rating	Alternative Body Color
Contact Molex	Panel-Mount Receptacle	2 to 7	IP64	Gray
	In-Line Receptacle			
	In-Line Receptacle Shrouded			
	Standard Male			
	Single-Use / Disposable Male			

172860 - 0 X X 0

Circuit Size

- 1=1 Circuit
- 2=2 Circuit
- 3=3 Circuit
- 4=4 Circuit
- 5=5 Circuit
- 6=6 Circuit
- 7=7 Circuit
- 8=8 Circuit

Options

- 1=Black No Seal
- 2=Black With Seal
- 3=Grey No Seal
- 4=Grey With Seal

D2 Version

Released Connector Kit Series No.	Description	Selective Circuit Sizes	Sealed IP Rating	Alternative Body Color
Contact Molex	Panel-Mount Receptacle	4 to 17	IP64	Gray
	In-Line Receptacle			
	In-Line Receptacle Shrouded			
	Standard Male			
	Single-Use / Disposable Male			

202110 - X X X 0

Circuit Size

- 01=1 Circuit
- 02=2 Circuit
- 03=3 Circuit
- 04=4 Circuit
- 05=5 Circuit
- 06=6 Circuit
- 07=7 Circuit
- 08=8 Circuit
- 09=9 Circuit
- 10=10 Circuit
- 11=11 Circuit
- 12=12 Circuit
- 13=13 Circuit
- 14=14 Circuit
- 15=15 Circuit
- 16=16 Circuit
- 17=17 Circuit

Options

- 1=Black No Seal
- 2=Black With Seal
- 3=Grey No Seal
- 4=Grey With Seal

www.molex.com/link/medispecmpc.html