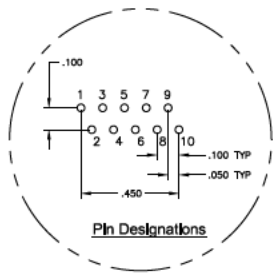
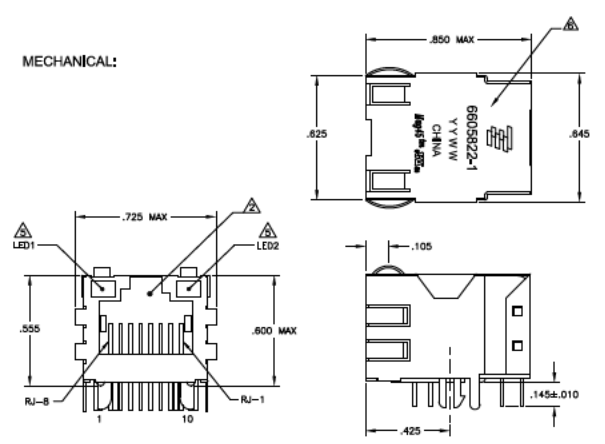
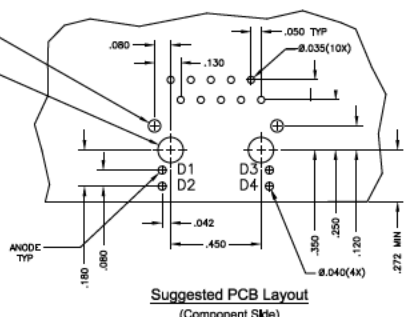
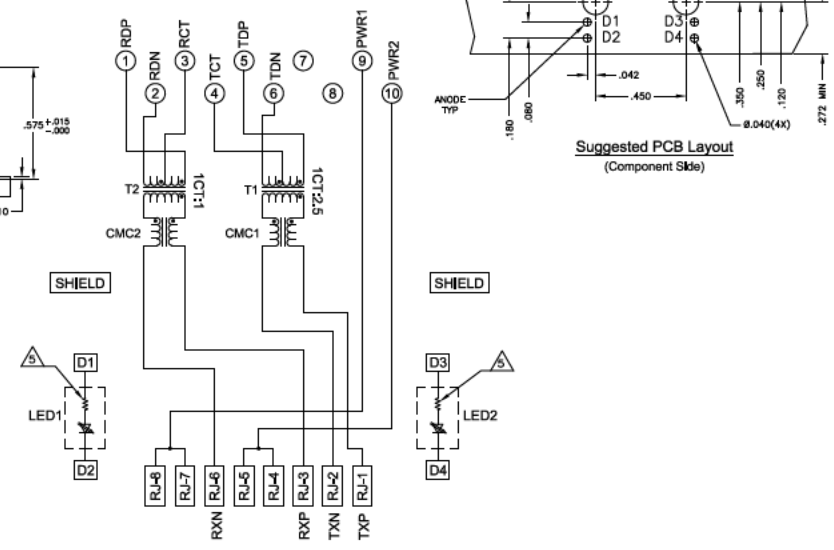
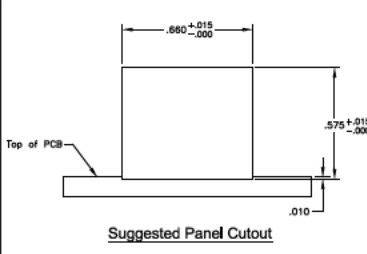


MECHANICAL:



ELECTRICAL:
7U24 SERIES MAGNETIC CIRCUIT



- REVISIONS**
- | REV | DATE | DESCRIPTION | BY | CHK |
|-----|------|---------------------------|---------|--------|
| AA | 22 | | | |
| B | | REV PER EOC-06-000785 | STAFORD | RG TX |
| BT | | REVISED PER EOC-06-000807 | TONOVON | KK AEC |
- MATERIALS:**
 - HOUSING - THERMOPLASTIC PET POLYESTER FLAMMABILITY RATINGS UL 94V-0.
 - SHIELD - .010" THICK, C26800 BRASS PREPLATED WITH 30μ INCH MIN SEMI-BRIGHT NICKEL, SOLDER TABS POST DIPPED WITH 100μ INCH MIN SAC SOLDER.
 - ROD JACK CONTACTS - 0.0157" x 0.08" PHOSPHOR BRONZE, 50μ INCH MIN OVRALL NICKEL UNDERPLATE, WITH SELECT 50μ INCH MIN HARD GOLD FINISH PLATE SOLDER TAILS WITH 100μ INCH MIN MATTE TIN AND/OR SAC SOLDER DP.
 - LIGHT EMITTING DIODE(LED) - DIFFUSED EPOXY LENS, .020" x .020" CARBON STEEL WIREFRAME LEADS PRE-PLATED WITH 80μ INCH SILVER OVER 45μ INCH NICKEL UNDERPLATE OVER 40μ INCH COPPER UNDERPLATE, POST-PLATED WITH 100μ INCH MIN MATTE TIN AND/OR SAC SOLDER DIP OR PURE TIN SOLDER DP.
 - RAS JACK CAVITY CONFORMS TO FCC RULES AND REGULATIONS PART 68, SUB PART F.**
 - MAGNETICS**
 - IMPEDANCE: 100 OHMS
 - TURNS RATIO (CHP CABLE): TX = 9.25, RX = 11
 - PUE CURRENT: 350mA DC MAX
 - PERFORMANCE @ 25°C
 - OPEN CIRCUIT INDUCTANCE (OCL): 140μ H MIN @100kHz, 0.1VRMS, TX & RX
 - LEAKAGE INDUCTANCE: 0.35uH MAX @100kHz, 0.1VRMS
 - INTERWINDING CAPACITANCE: 15pF MAX @100kHz, 0.1VRMS
 - ISOLATION VOLTAGE: COMPLIES WITH EEE802.3af 2003, PARA 33A.1, ITEM a.
 - 4. OPERATING TEMPERATURE: FROM 0°C TO +70°C.
 - LEDS WITH BUILT-IN RESISTOR**
 - LEDS ARE DRIVEN WITH 5V VOLTAGE AND THE MAX OPERATING CURRENT IS 20mA.
 - LED COLOR-DOMINANT WAVELENGTH (λD): GREEN 568 nm TYP @ VF=5V
 - FORWARD CURRENT IF: 50mA TYP @ VF=5V
 - DOMINANT WAVELENGTH (λD): YELLOW 588 nm TYP @ VF=5V
 - FORWARD CURRENT IF: 15mA TYP @ VF=5V
 - TYCO ELECTRONICS LOGO, PART NUMBER, DATE CODE, COUNTRY OF ORIGIN AND AGENCY APPROVAL MARKING N APPROXIMATE LOCATION SHOWN.**
 - 7. THESE PARTS ARE RECOMMENDED FOR WAVE SOLDERING PROCESS, PEAK WAVE SOLDERING TEMPERATURE IS 245°C MAX, 10sec MAX.
 - OBsolete PARTS: OBSOLETE CIS STREAMLINING PER D.RENAUD/D.SINISI**

REV	DATE	DESCRIPTION	BY	CHK
AA	22			
B		REV PER EOC-06-000785	STAFORD	RG TX
BT		REVISED PER EOC-06-000807	TONOVON	KK AEC

REV	DATE	DESCRIPTION	BY	CHK
AA	22			
B		REV PER EOC-06-000785	STAFORD	RG TX
BT		REVISED PER EOC-06-000807	TONOVON	KK AEC

REV	DATE	DESCRIPTION	BY	CHK
AA	22			
B		REV PER EOC-06-000785	STAFORD	RG TX
BT		REVISED PER EOC-06-000807	TONOVON	KK AEC

REV	DATE	DESCRIPTION	BY	CHK
AA	22			
B		REV PER EOC-06-000785	STAFORD	RG TX
BT		REVISED PER EOC-06-000807	TONOVON	KK AEC