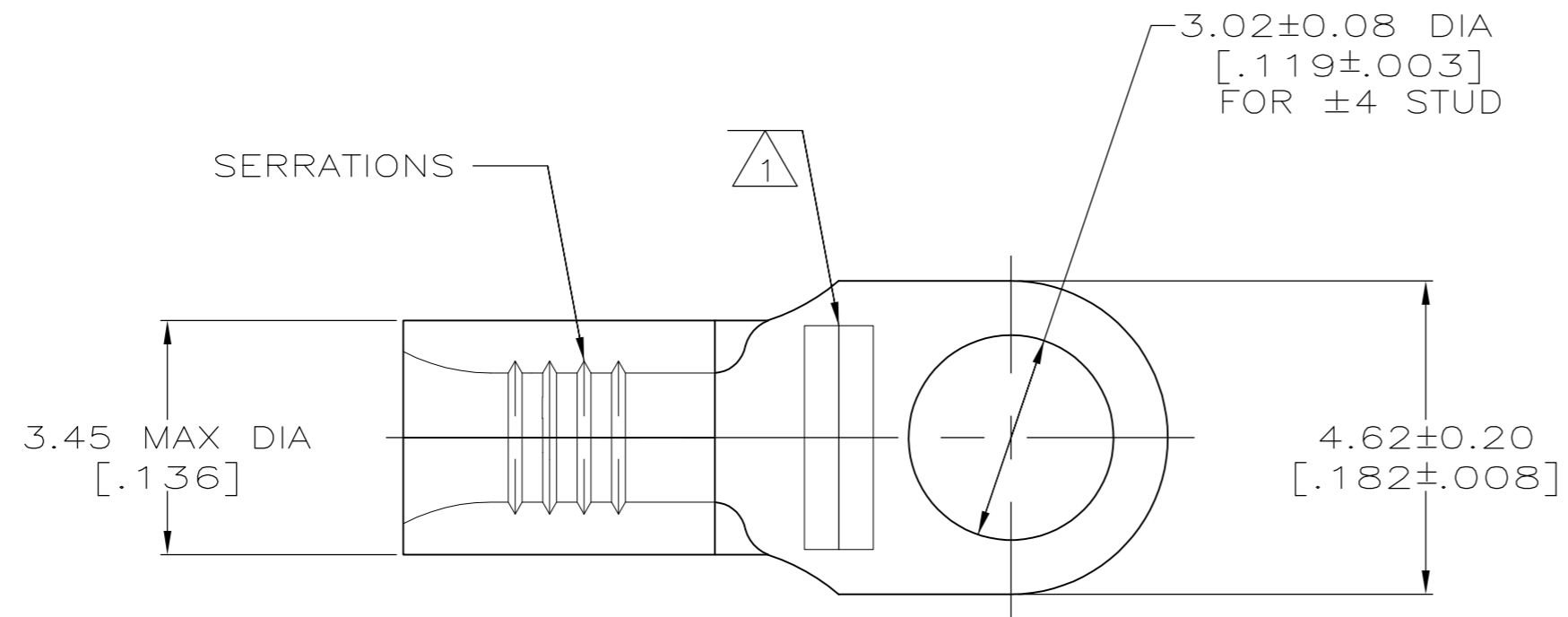
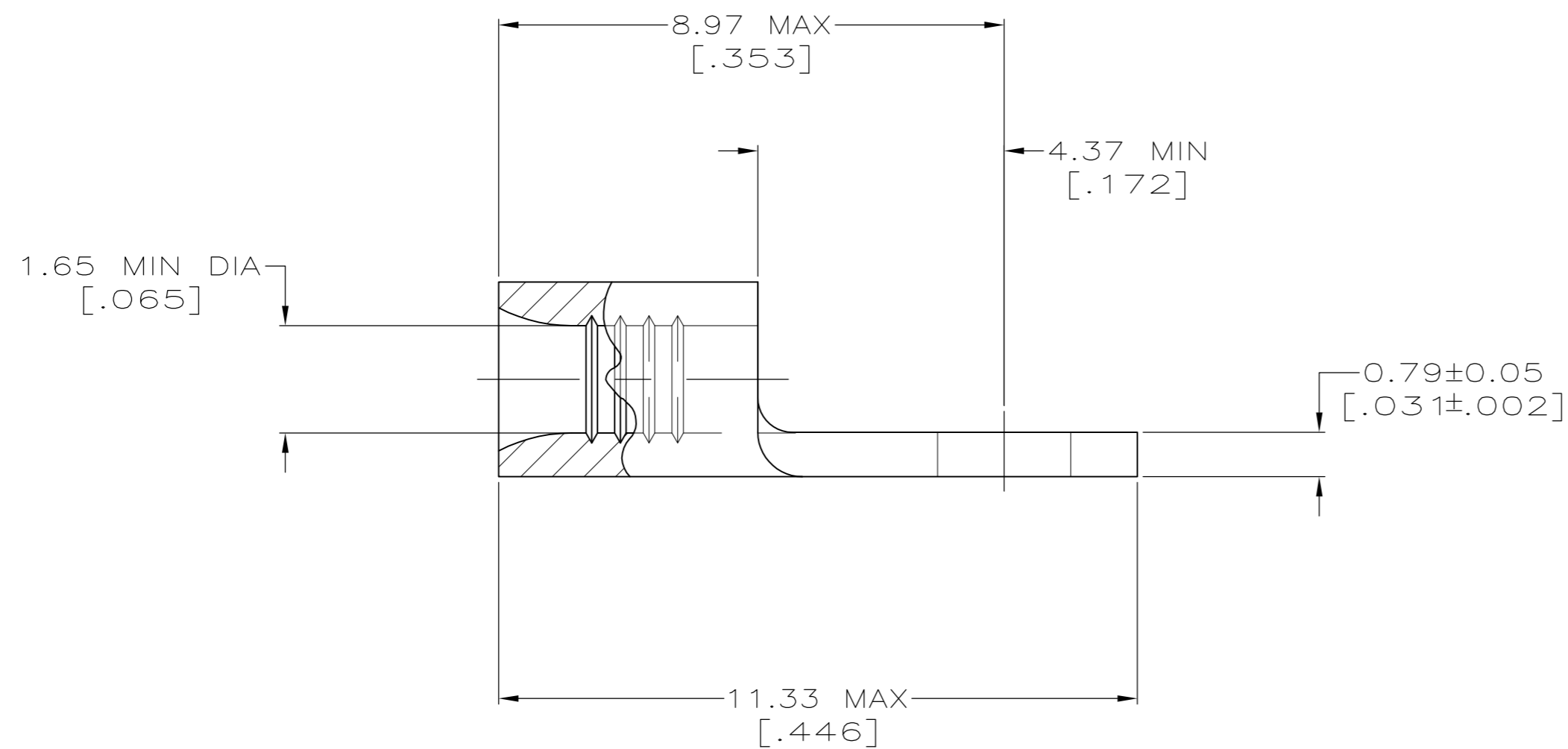


THIS DRAWING IS UNPUBLISHED. RELEASED FOR PUBLICATION
 © COPYRIGHT - By - ALL RIGHTS RESERVED.

LOC	DIST	REVISIONS			
P	LTR	DESCRIPTION	DATE	DWN	APVD
G	14	A2	REVISED PER ECO-13-001411	25JAN13	KH DR



AMP WIRE RANGE	E13288 Listed
22-16 AWG STRANDED	22-16 AWG STRANDED



- 1 STAMP AMP 22-18* APPROX AS SHOWN
22-16 TERMINALS ARE STAMPED 22-18 IN
ACCORDANCE WITH MILITARY SPECIFICATION
SAE AS7928, COMMERCIAL WIRE RANGE IS 22-16
- 2 CLEANED-UNPLATED
- 3 NOT UL LISTED
- 4 FINISH: TIN PLATE 0.00254 [.000100] MIN EXT
THK PER ASTM B545

AMP INCORPORATED CUSTOMER SERVICE SYSTEMS

MAX RECOMMENDED OPERATING
TEMPERATURE:
170°C[338°F] MAX

FOR ADDITIONAL
PRODUCT INFORMATION OR
COPIES OF DRAWINGS
AND TECHNICAL DOCUMENTS

PRODUCT INFORMATION CENTER
1-800-522-6752

VOLTAGE RATING:
NOT APPLICABLE

FOR APPLICATION
TOOLING INFORMATION

TOOLING ASSISTANCE CENTER
1-800-722-1111

WIRE CROSS SECTIONAL AREA RANGE:
0.26-1.65mm² [509-3,260] CIR MILS
STRANDED

FOR ORDER ENTRY

1-800-526-5142

THIS DRAWING IS A CONTROLLED DOCUMENT FOR
AMP INCORPORATED. IT IS SUBJECT TO CHANGE
AND THE CONTROLLING ENGINEERING ORGANIZATION
SHOULD BE CONTACTED FOR THE LATEST REVISION.

PRELIMINARY 3	2	1000	LOOSE PIECE	36189-1
	4	1000	LOOSE PIECE	36189
FINISH		QUANTITY	PACKAGE TYPE	PART NUMBER
THIS DRAWING IS A CONTROLLED DOCUMENT.		DWN TA BRINKMAN 2-2-93	TE Connectivity	
DIMENSIONS: mm [INCHES]		CHK DA PATTERSON 2-2-93		
TOLERANCES UNLESS OTHERWISE SPECIFIED:		APVD DE MILLER 2-2-93		
0 PLC ± -		NAME		
1 PLC ± -		PRODUCT SPEC	TERMINAL, RING TONGUE, BUDGET	
2 PLC ± -		APPLICATION SPEC	SIZE	CAGE CODE
3 PLC ± -		WEIGHT	A2	00779
4 PLC ± -		MATERIAL	DRAWING NO	
ANGLES ± -		FINISH	C=36189	
COPPER PER ASTM B-152 ANNEALED		SEE TABLE	SCALE	SHEET
			10:1	1 OF 1
		CUSTOMER DRAWING	REV	A2