

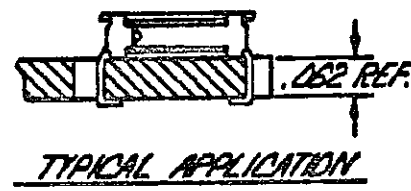
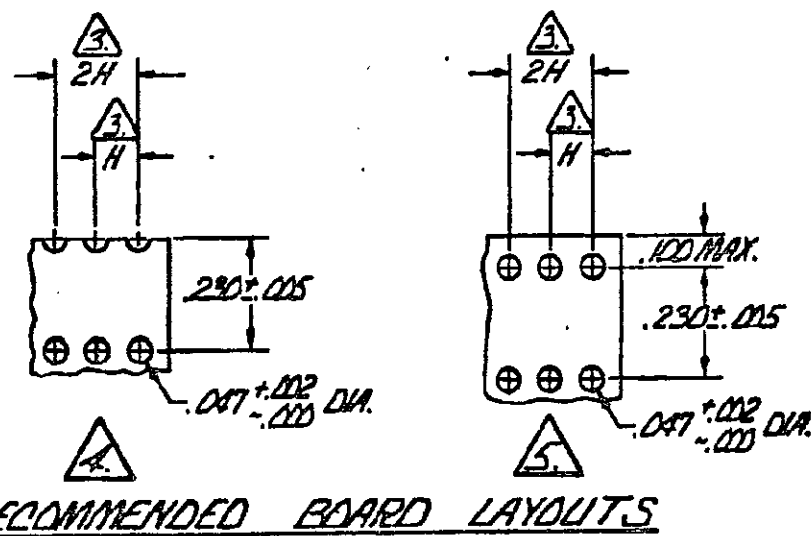
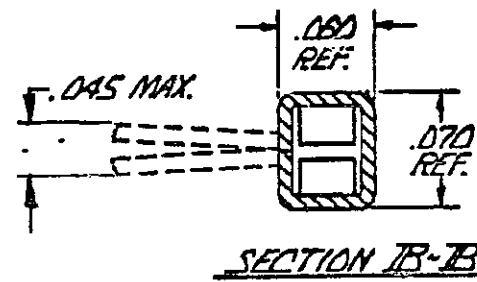
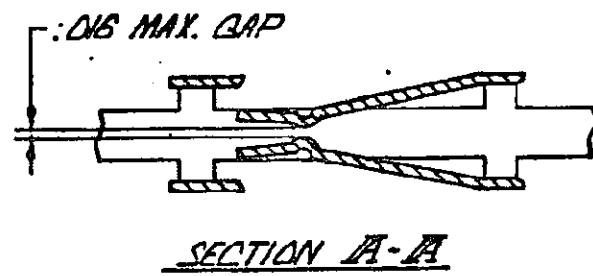
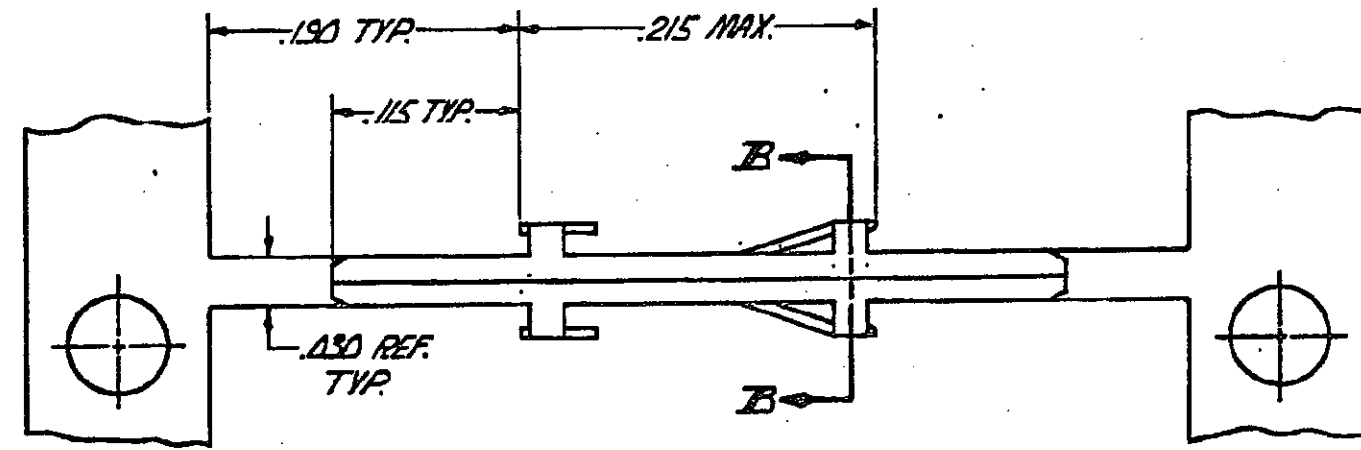
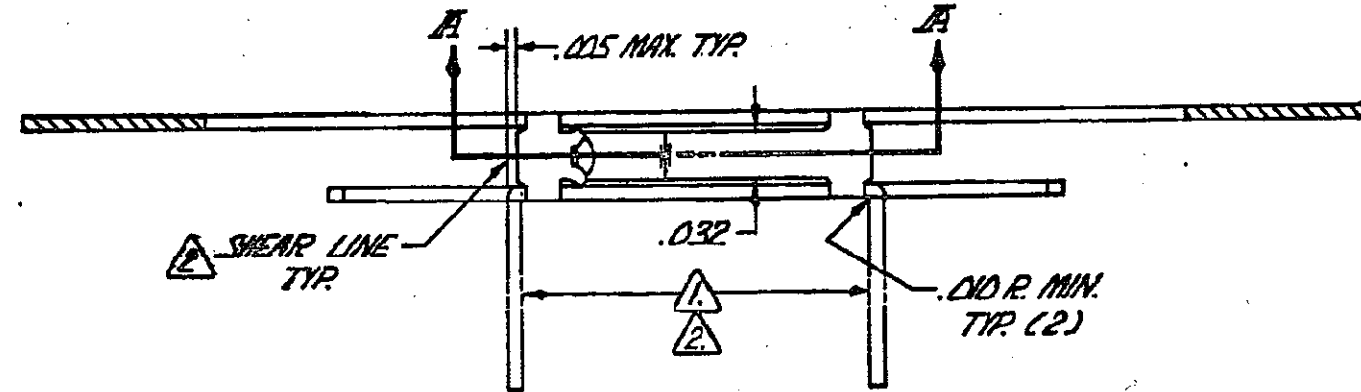
DRAWING MADE IN THIRD ANGLE PROJECTION

© COPYRIGHT 1978 BY AMP INCORPORATED, HARRISBURG, PA.
ALL INTERNATIONAL RIGHTS RESERVED. AMP INCORPORATED PRODUCTS
COVERED BY U. S. AND FOREIGN PATENTS AND/OR PATENTS PENDING.


102096-1 I. AS SHOWN.

LOG DIST
ADL 37

| REVISIONS | | | | | | |
|-----------|---|------|-----|----------------------|--------|--------------|
| P | F | ZONE | LTR | DESCRIPTION | DATE | APPROVED |
| 1 | | | 2 | RELEASED | | |
| | | | A | EC. 0010-0408-94 | TR | 1/24/85 C. 2 |
| | | | B | REV PER 0310-0179-97 | 4/7/97 | JH |



- ⚠ TINES WILL BE BENT 90° IN APPLICATOR PRIOR TO ASSEMBLY INTO P.C. BOARD.
- ⚠ CONTACT LEGS SHOWN IN PHANTOM & SHEAR LINES DEFINE LOOSE PIECE PART.
- ⚠ H = RECEPTACLE CENTERS MAY VARY DEPENDING ON REQUIREMENTS. MINIMUM NOMINAL CENTERLINE SPACING BETWEEN ADJACENT RECEPTACLES IS .100". .003 TOLERANCE NOT TO ACCUMULATE OVER LENGTH OF BOARD.
- ⚠ THIS CONFIGURATION RECOMMENDED FOR RECEPTACLE WHEN MATING WITH POST NO. 85144 OR 87022.
- ⚠ THIS CONFIGURATION MAY NOT BE USED WITH POST NO. 85144 OR 87022.
- 6. SEE 102120-1 FOR LOOSE PIECE

| | | |
|--|---|---|
| UNLESS OTHERWISE SPECIFIED DIMENSIONS ARE IN INCHES. TOLERANCES ON: DECIMALS ±.005 ANGLES | CONTRACT NO |  AMP INCORPORATED Harrisburg, Pa. |
| | DR <i>Bill Pongluy</i> 4-9-78 CHK <i>B. Kelly</i> 4-10-78 APPD <i>Rob Rohlfs</i> 4-11-78 APPD <i>Bennett</i> 4-18-78 | |
| MATERIAL .008 COMMERCIAL PHOS. BRONZE | DESIGN APPD | NAME RECEPTACLE CONTACT; MOD II, STRIP, SHORT POINT-OF-CONTACT TYPE C. |
| FINISH TIN PLATE .000030 MIN. THK. | OTHER APPD | SIZE CODE IDENT NO DRAWING NO C 00779 102096 |
| | | SCALE — SHEET 1 OF 1 |